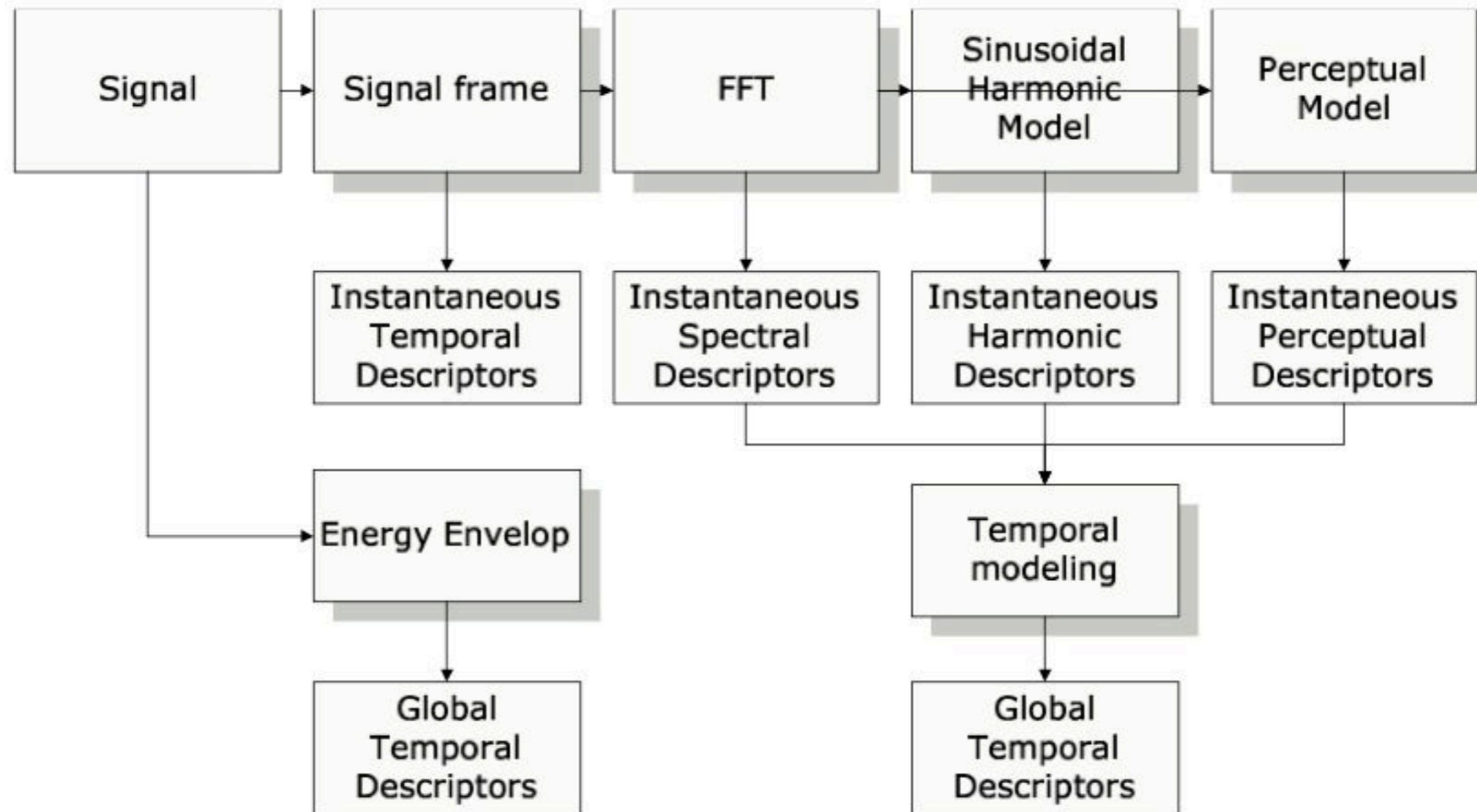


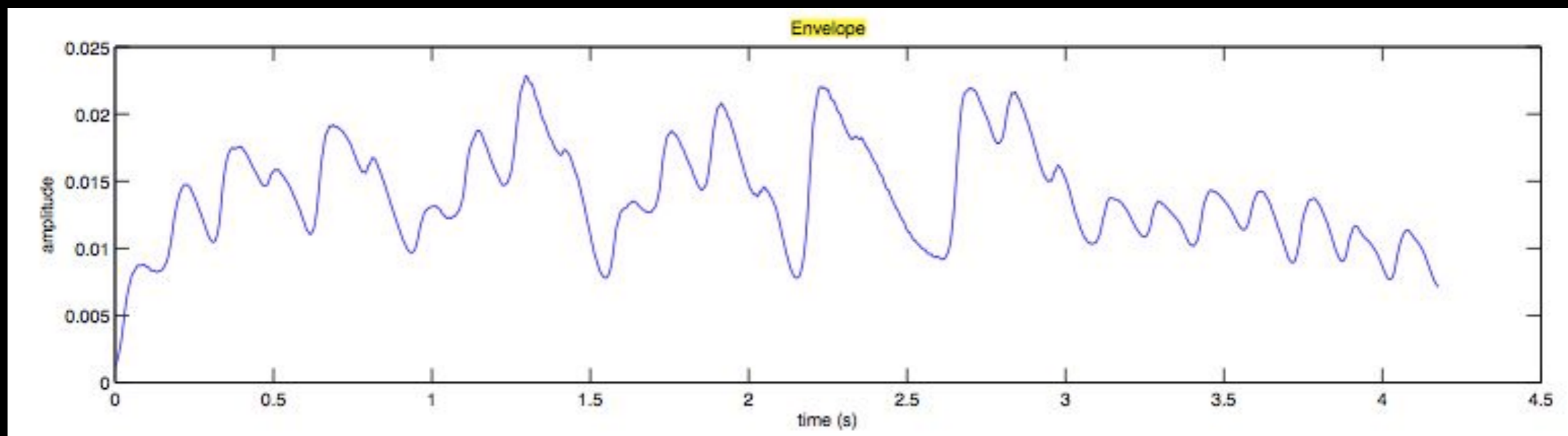
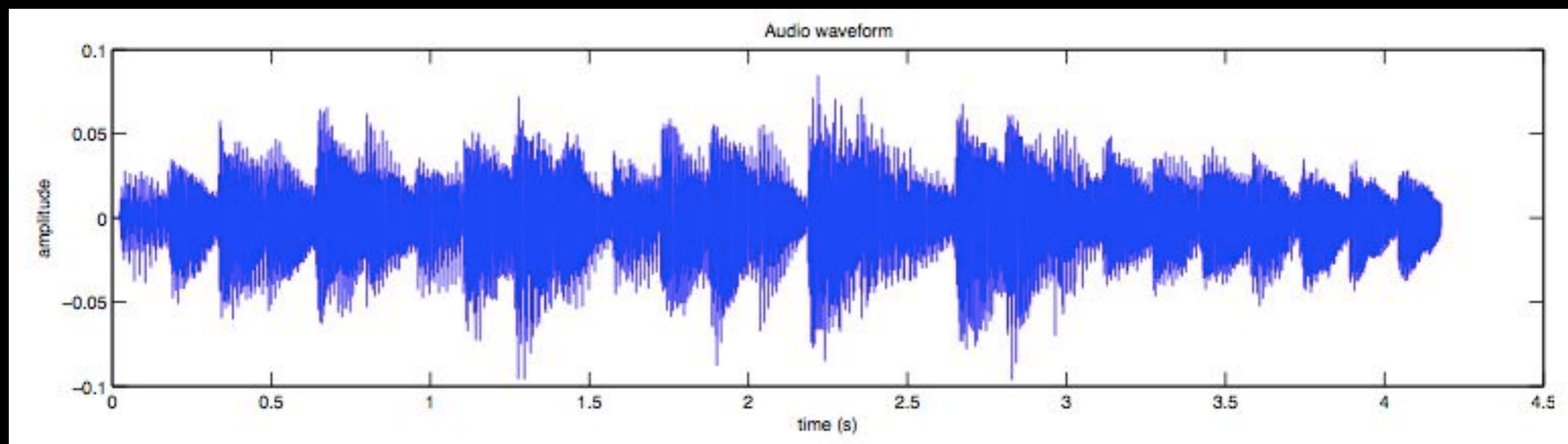
# Sound descriptors

Alexander Refsum Jensenius

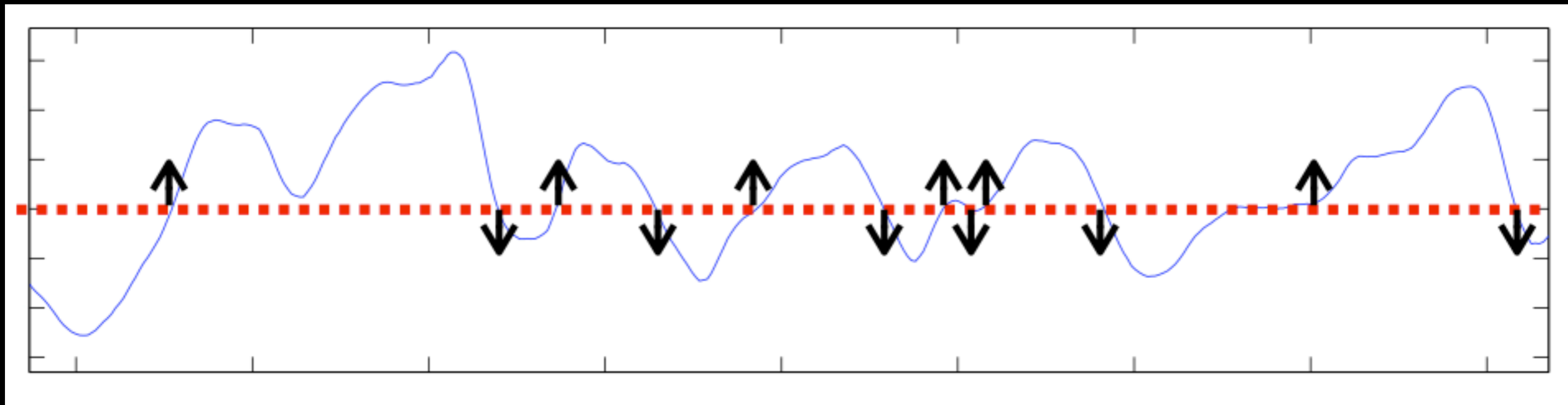


# Temporal descriptors

# Envelope

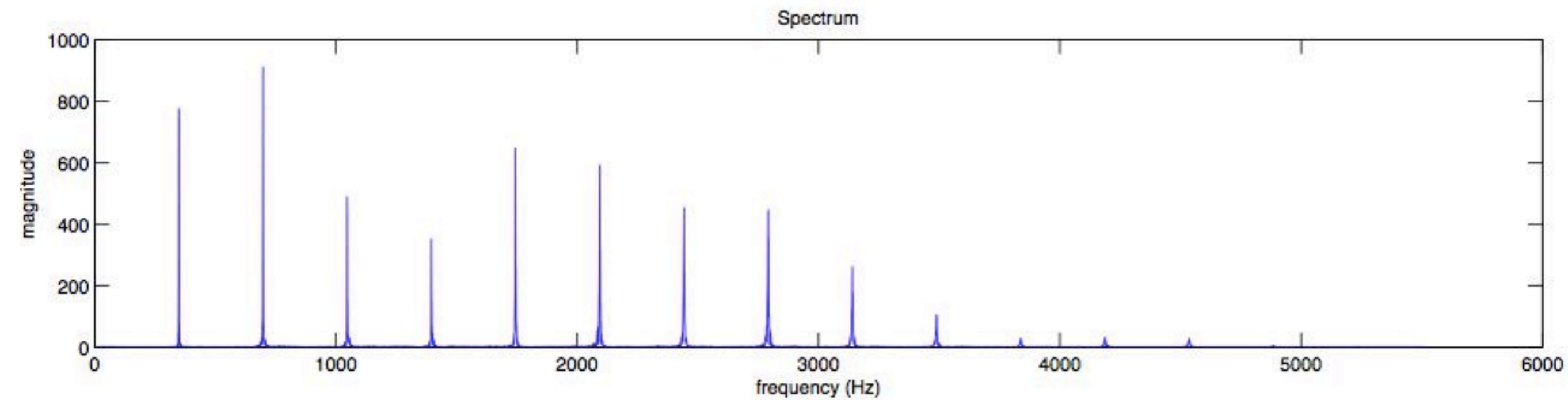


ZCR = zero crossings

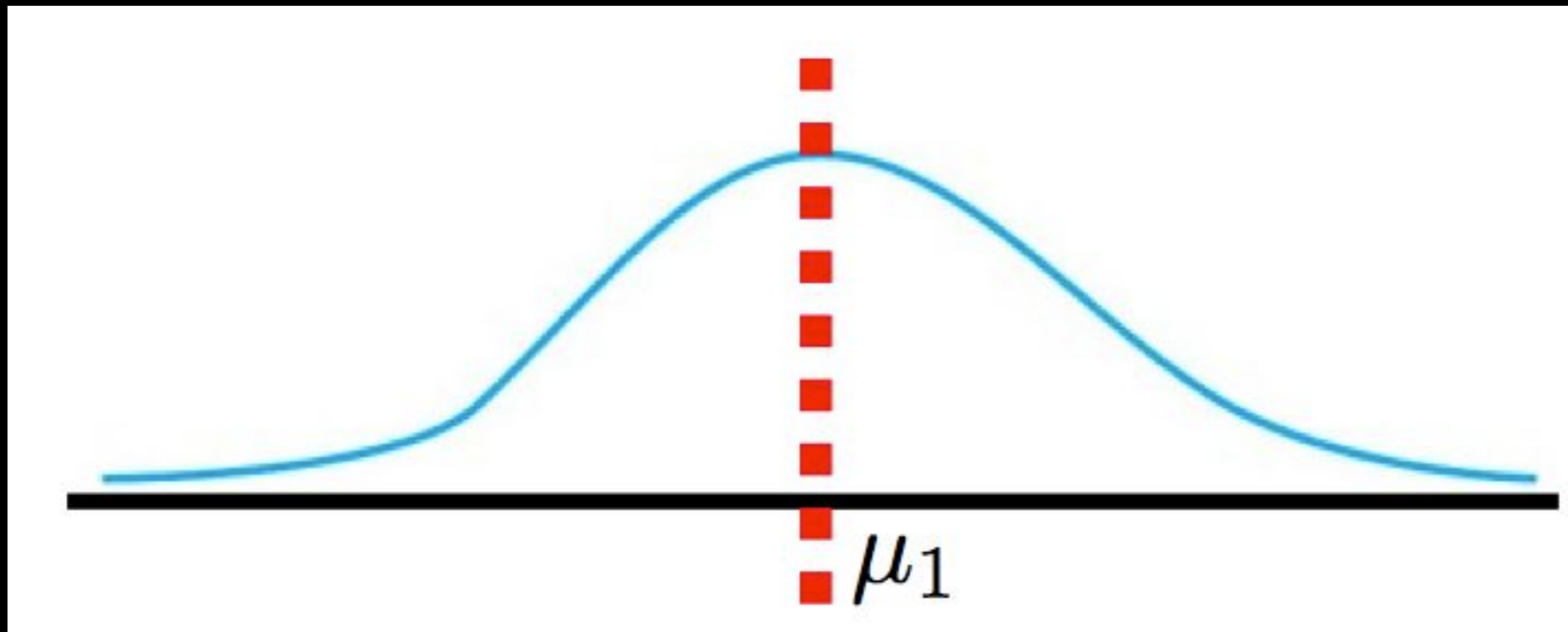


# Spectral features

# Spectrum

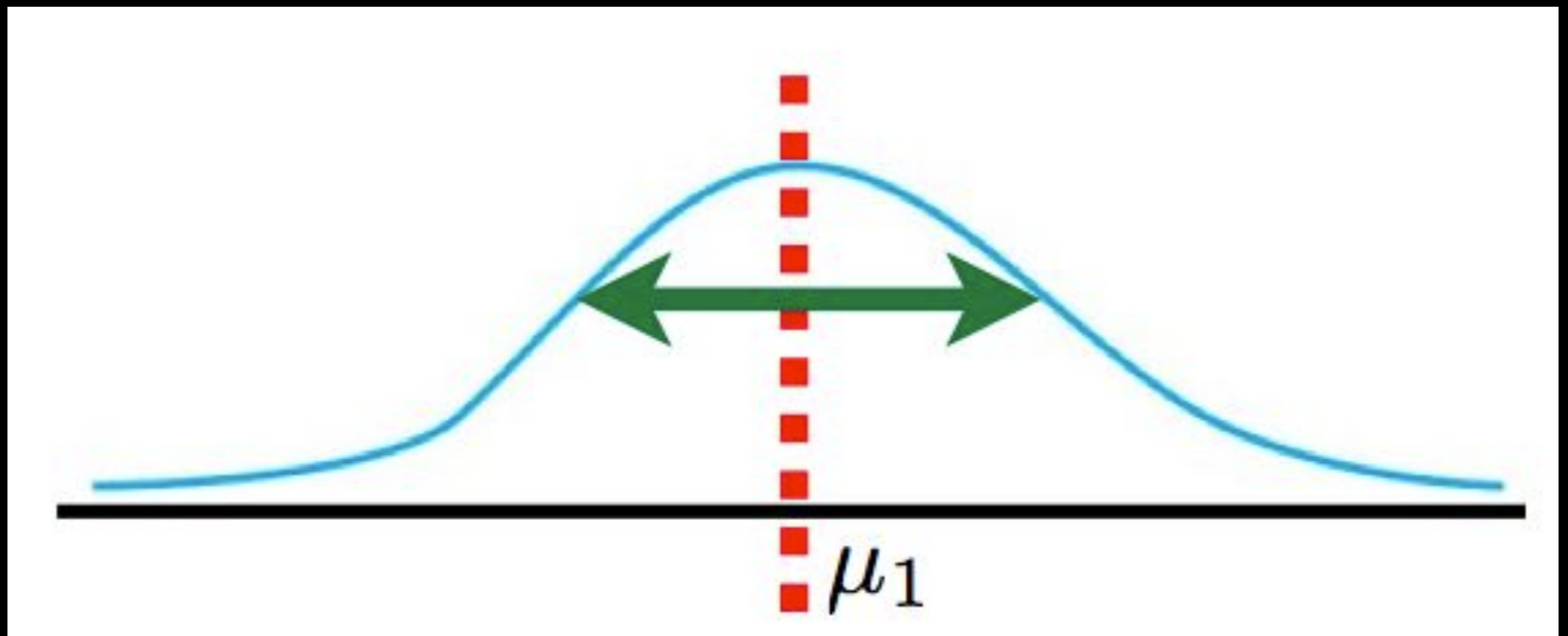


# Spectral centroid



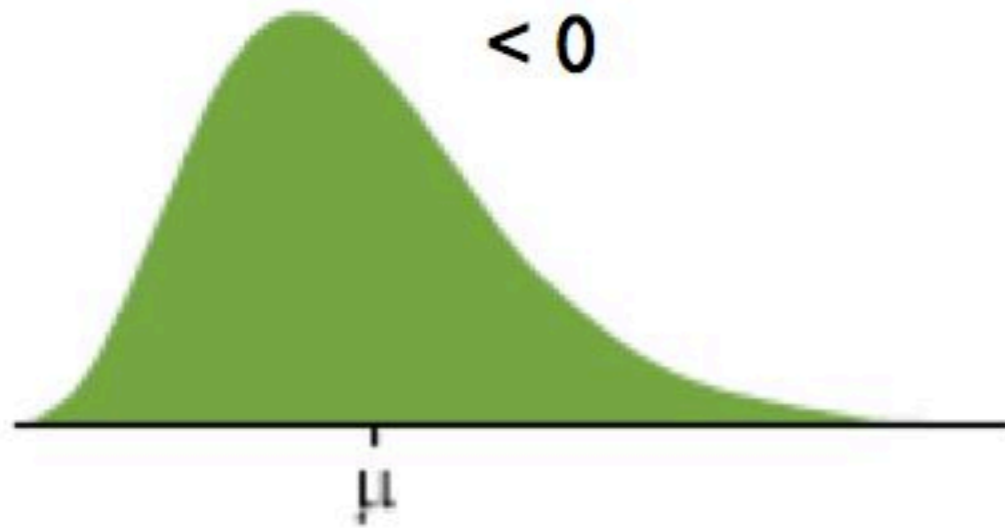


# Spectral spread

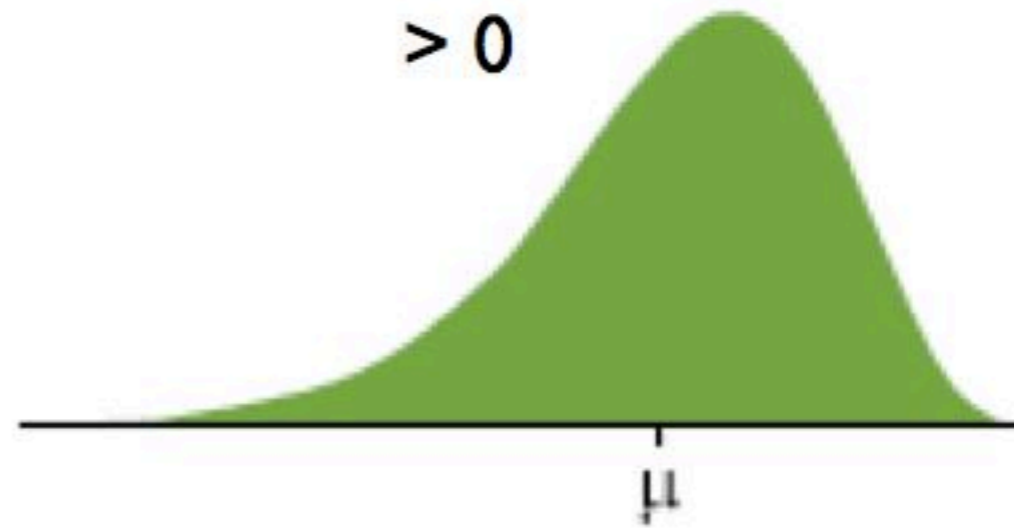


# Spectral skewness

-3



$> 0$



+3

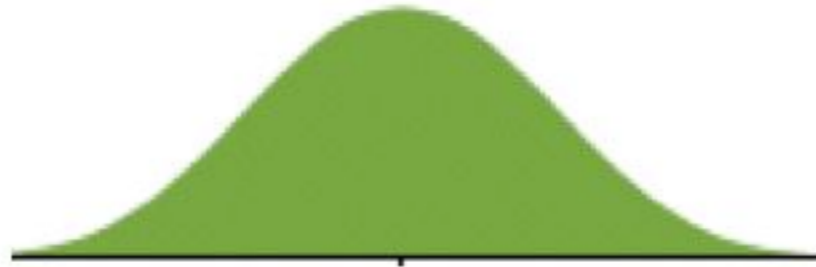
# Spectral kurtosis

-2

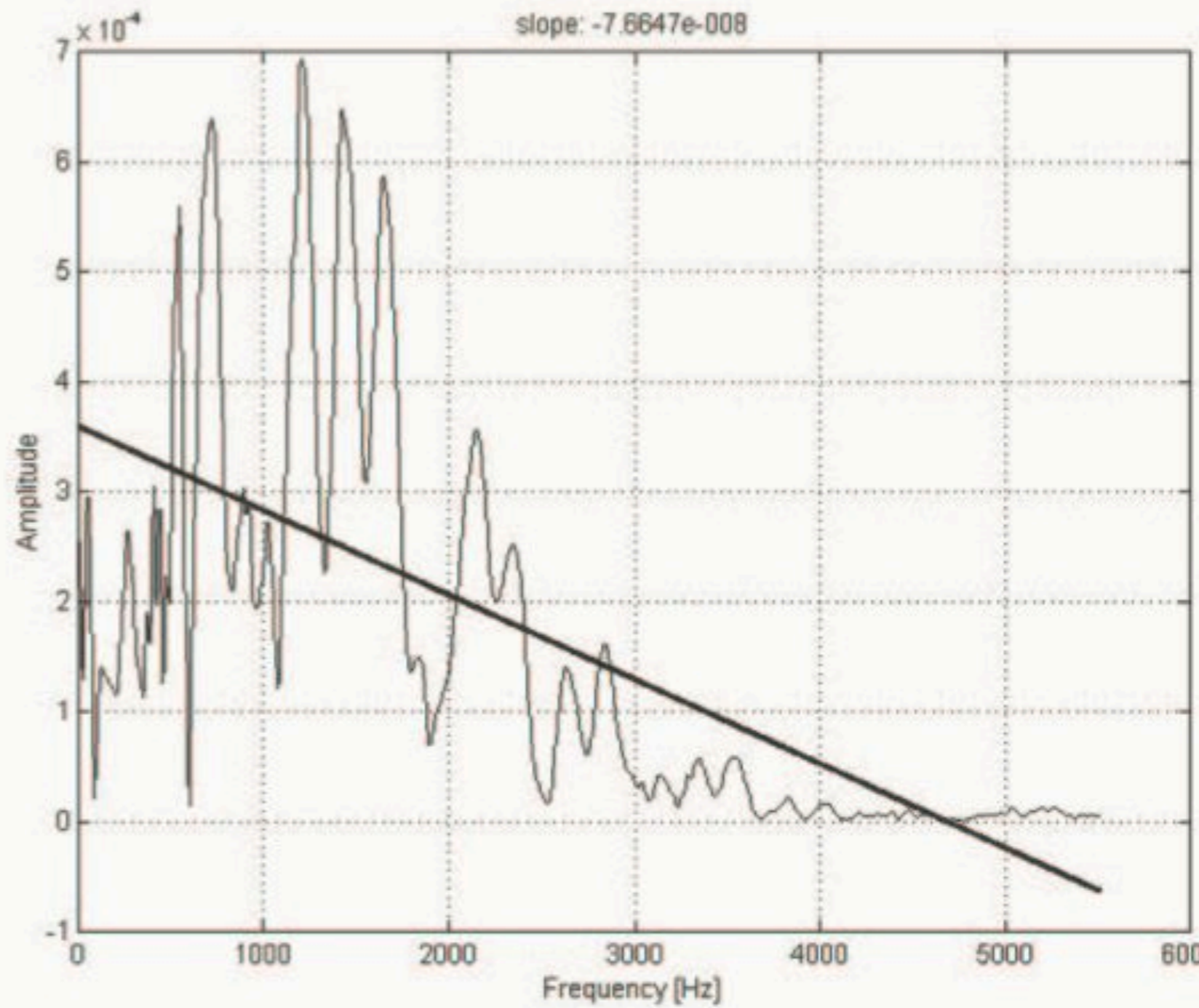
< 0

0

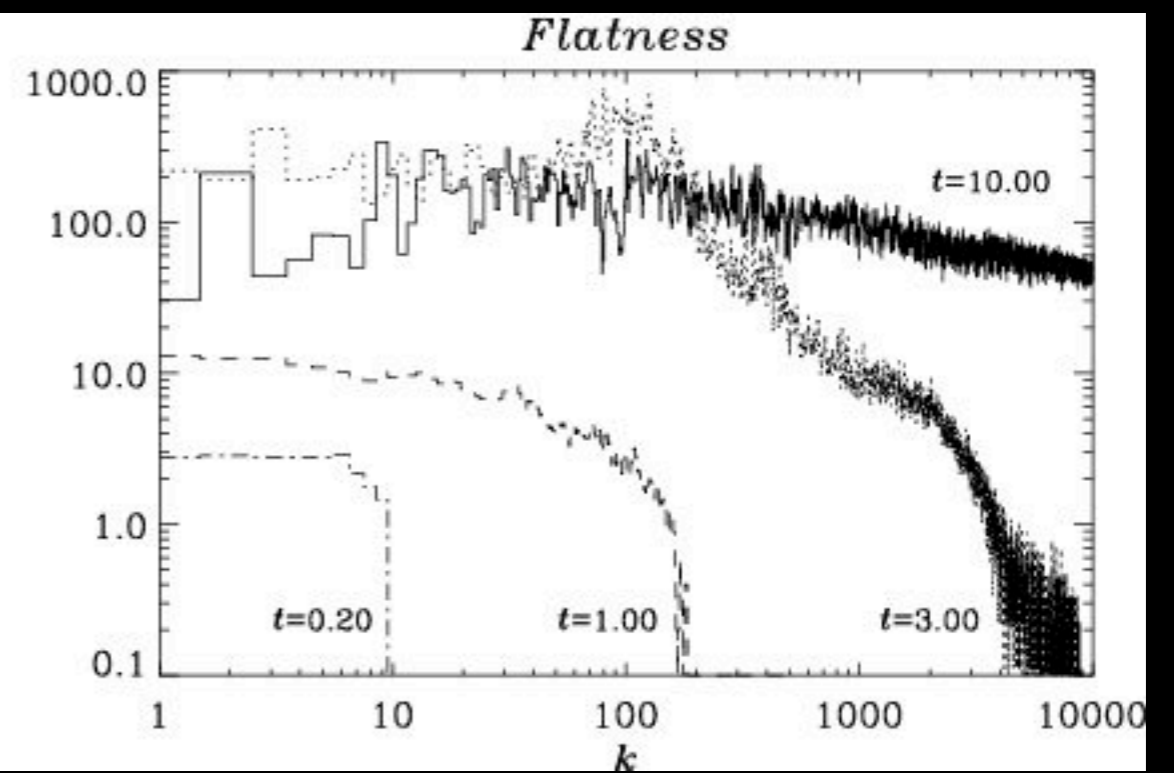
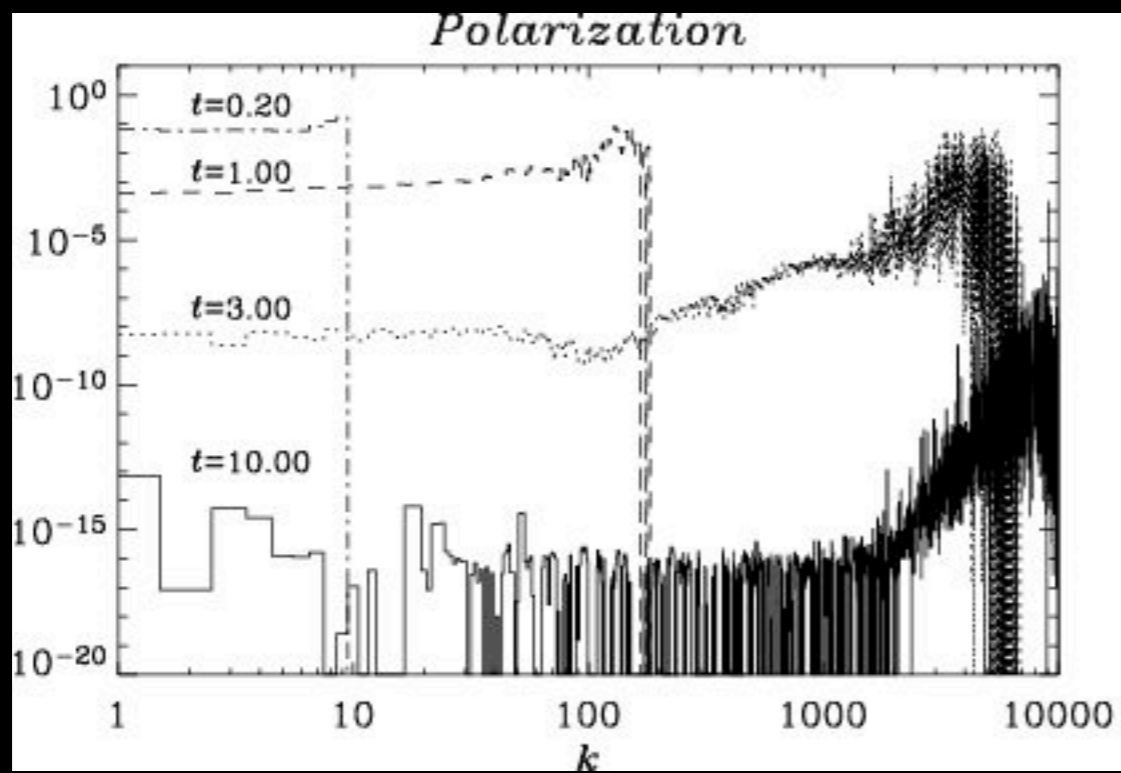
> 0



# Spectral slope

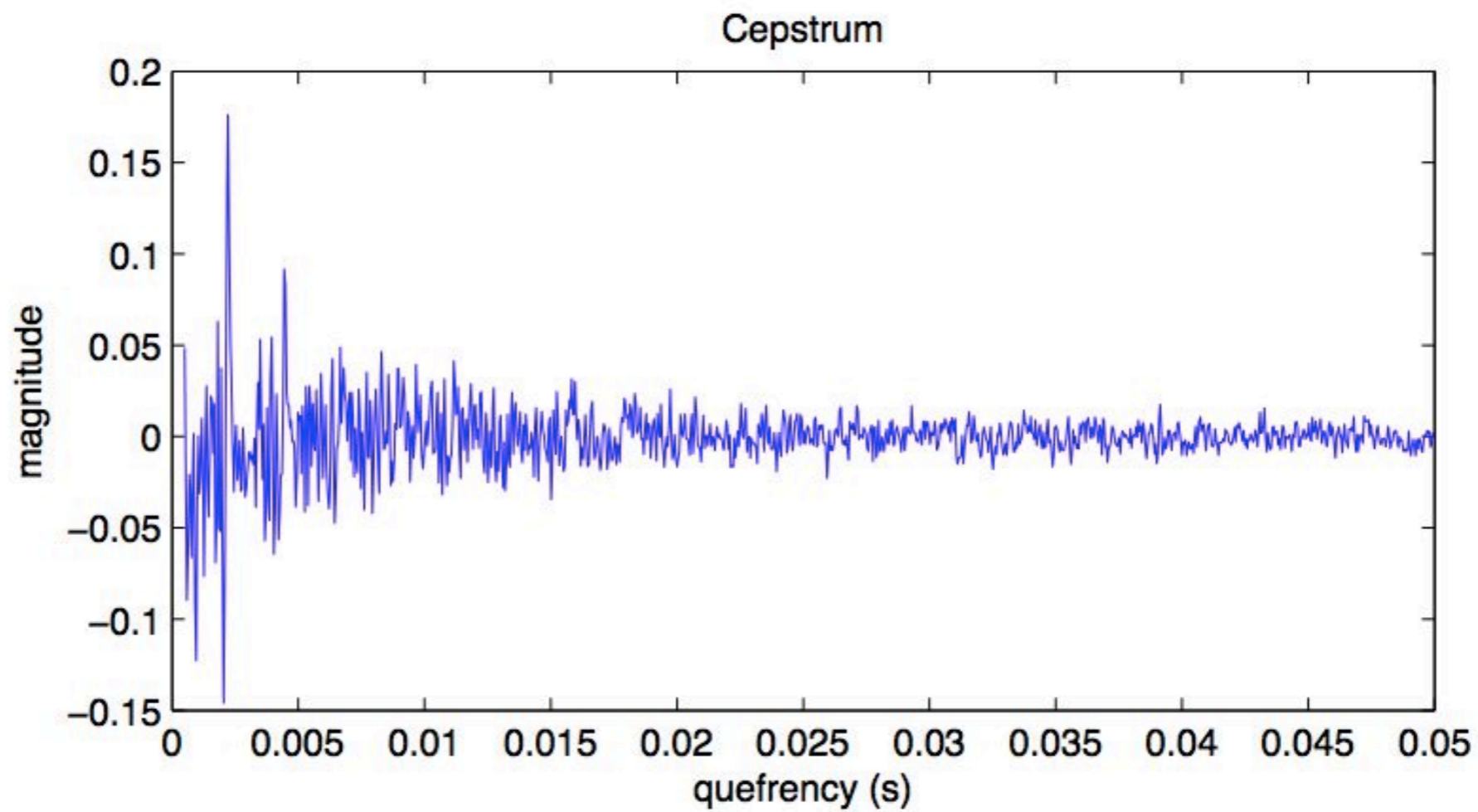
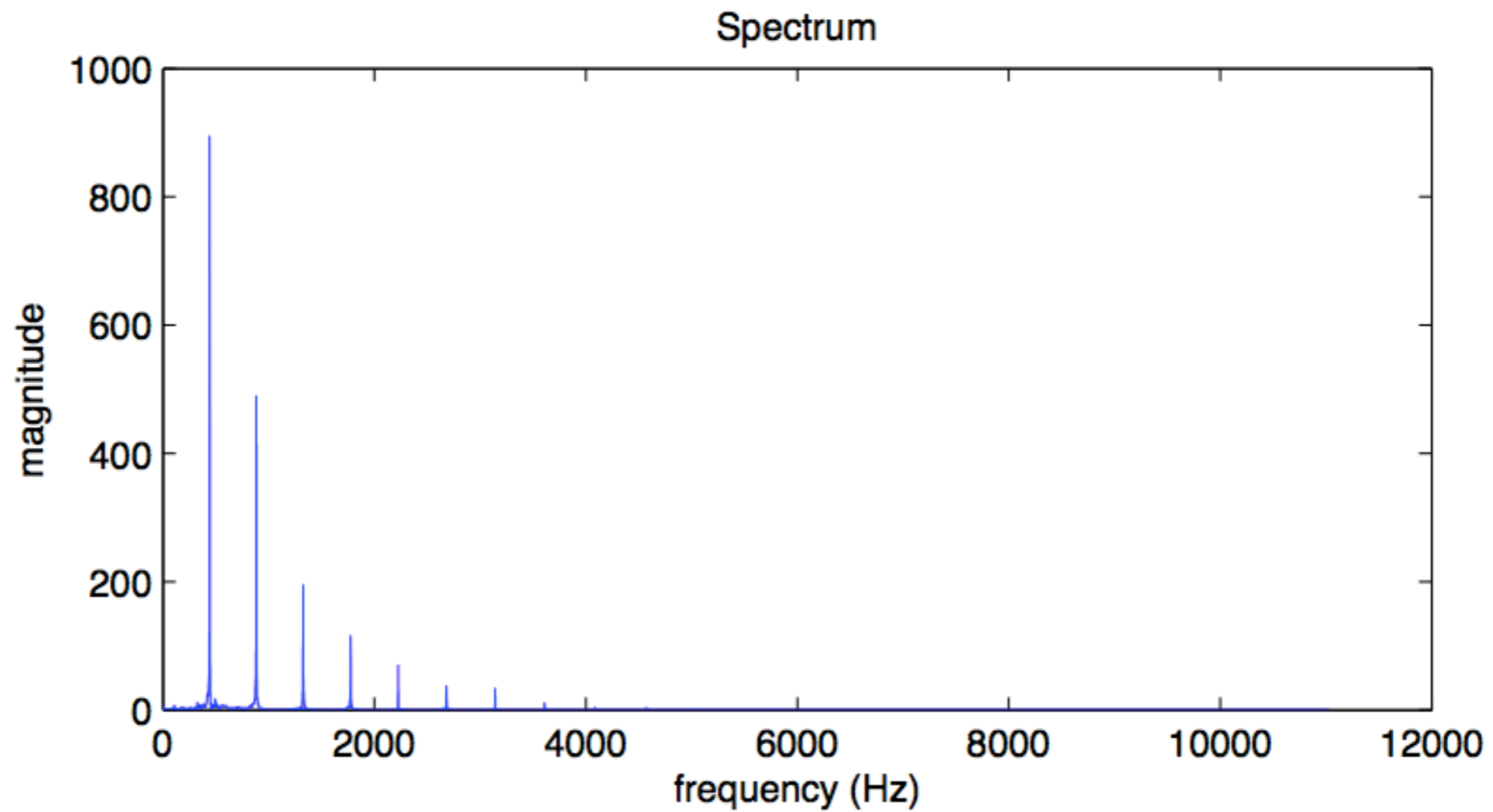


# Spectral flatness

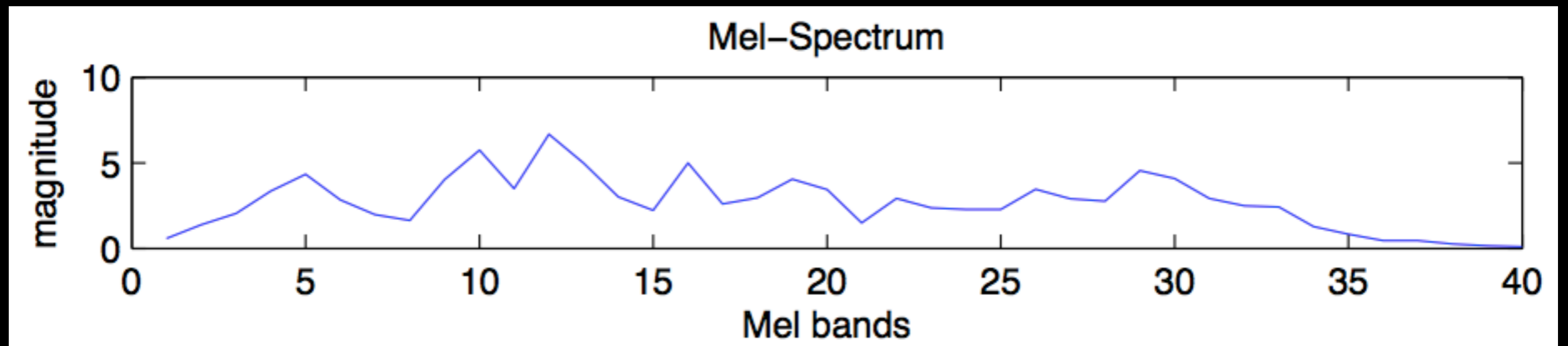
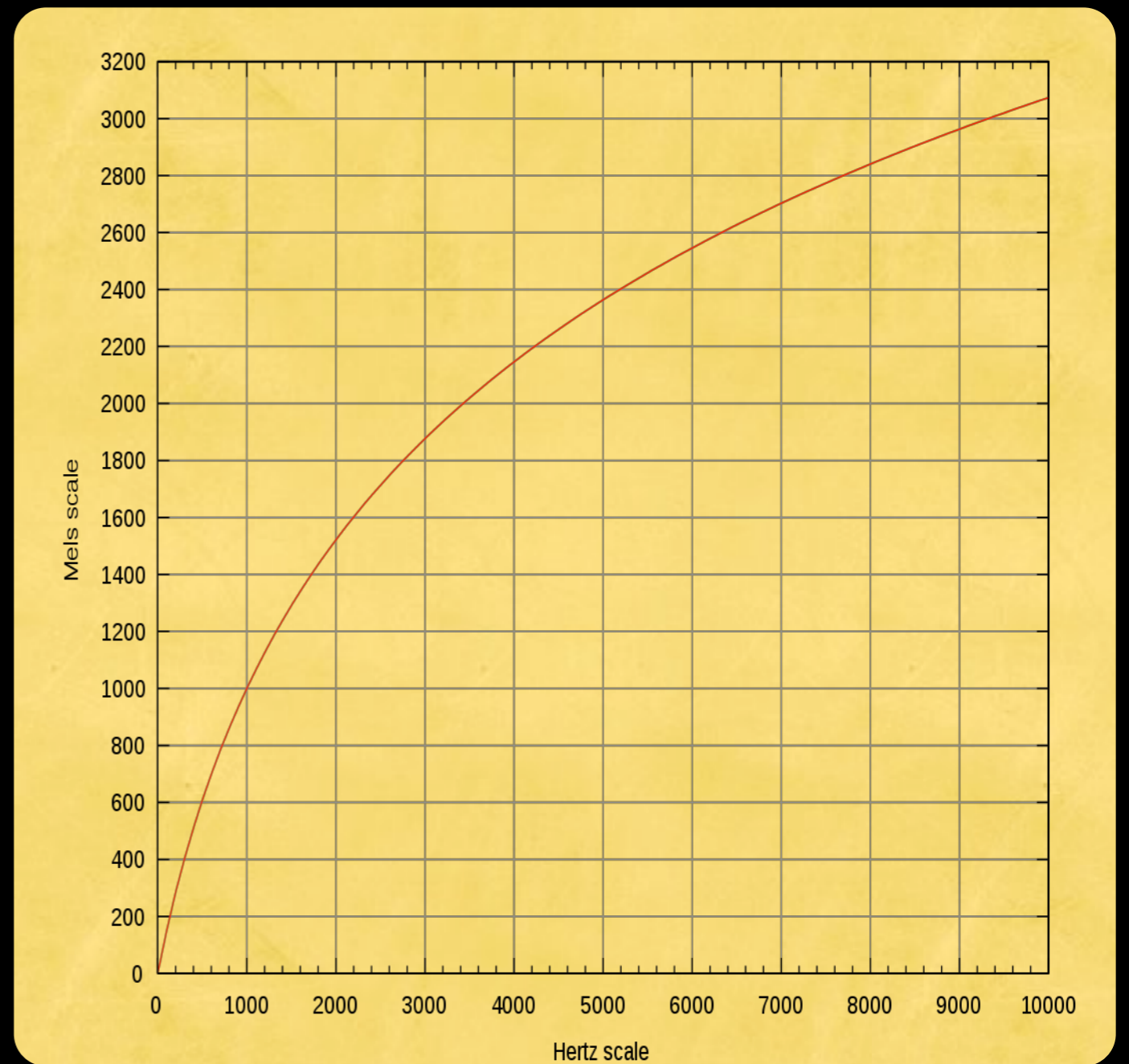


Perceptual features

# Cepstrum



# Mel spectrum





# Bark spectrum

