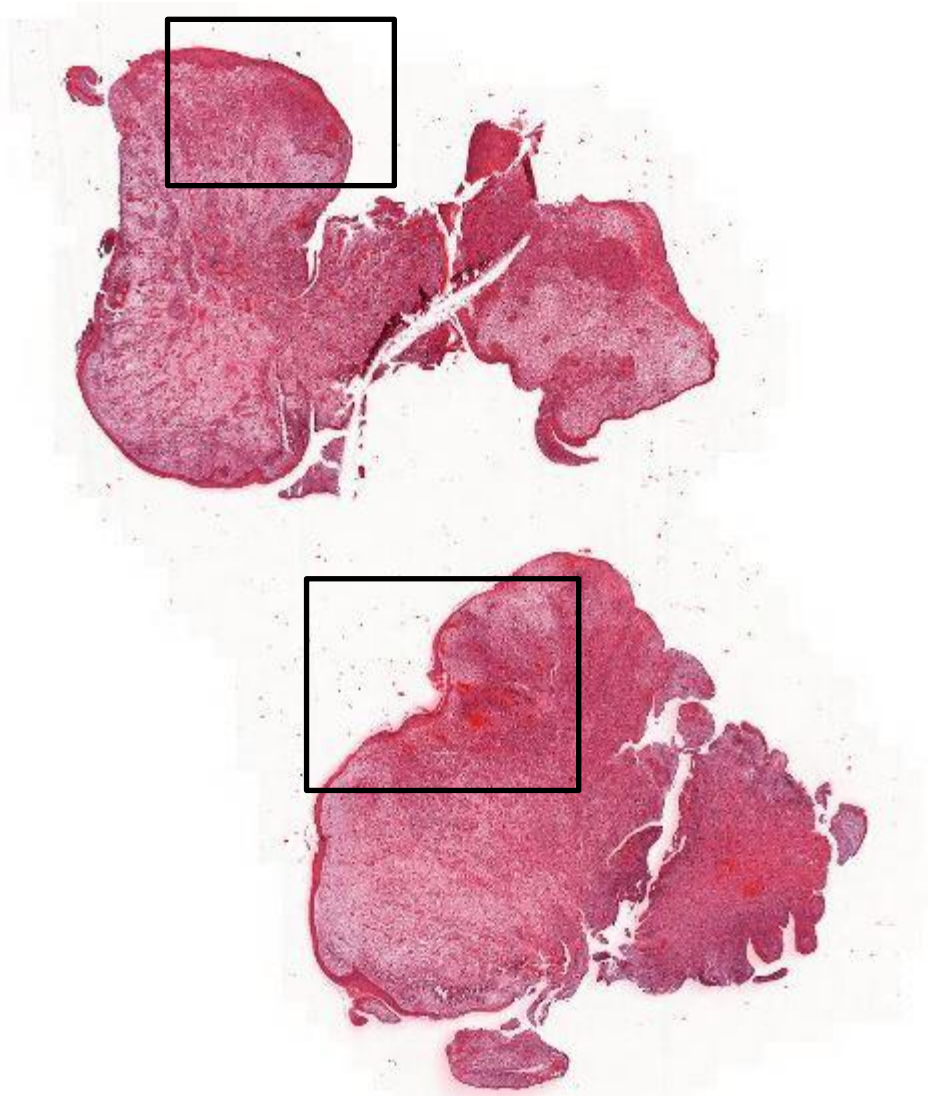


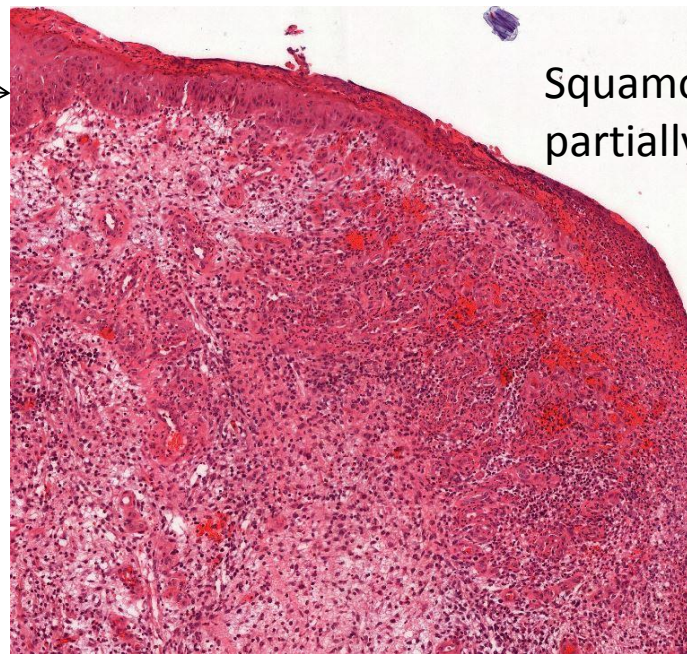
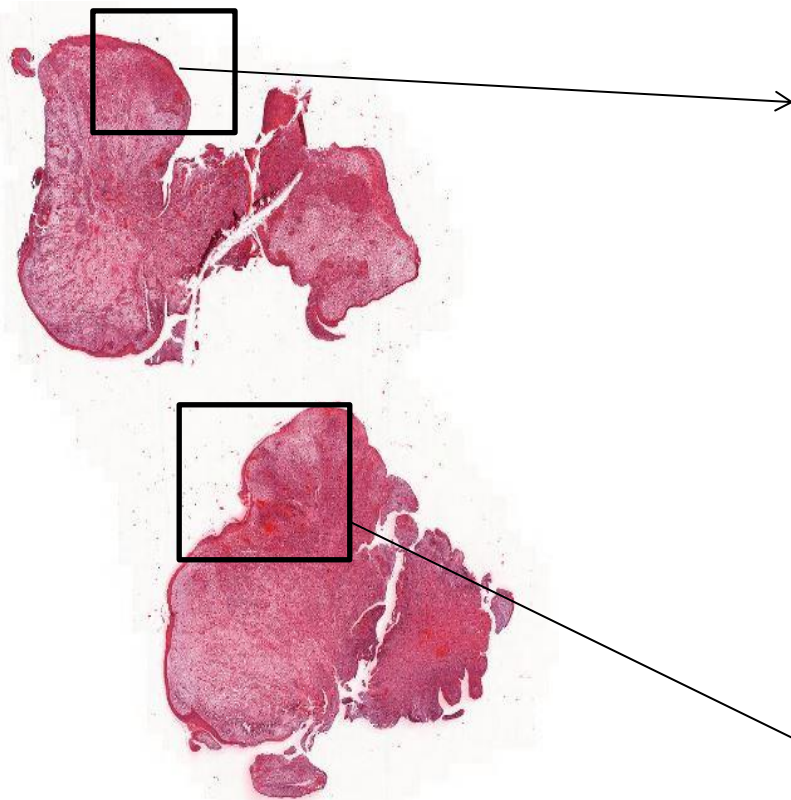
Embryonal rhabdomyosarcoma, «botryoid tumor»



Shape of pieces. Surface?

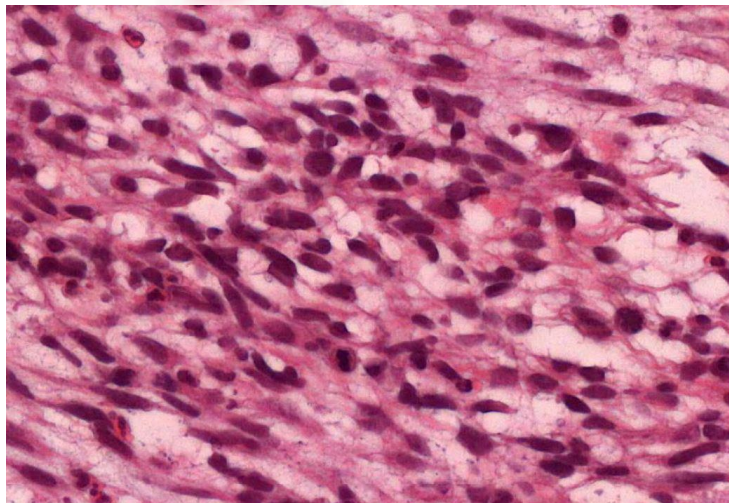
What is in the stroma? Describe the cells.

Cambium layer?



Squamous surface,
partially ulcerated

Loose stroma with
vessels and
spindle shaped
myoblasts



Spindle shaped tumor cells with mitoses

Condensation
around vessels or
under surfaces: '
cambium layer

