

## Endometriod adenocarcinoma

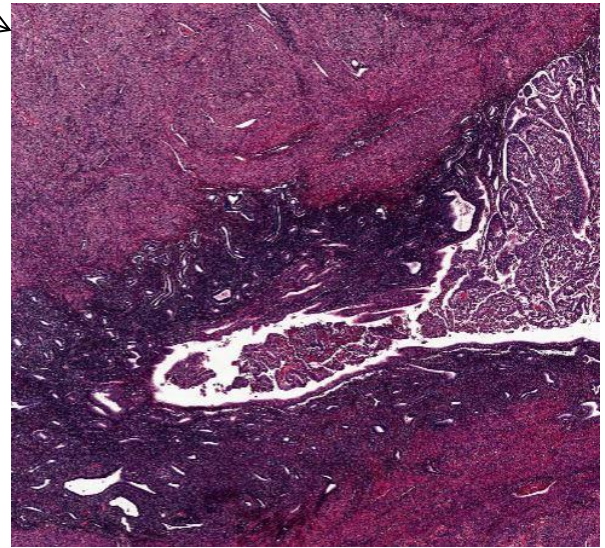
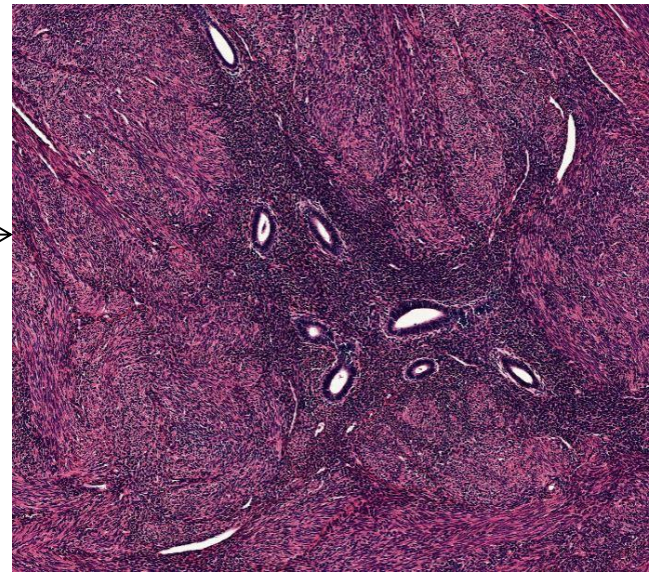
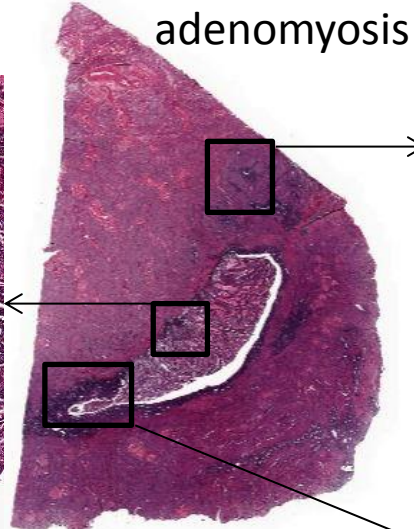
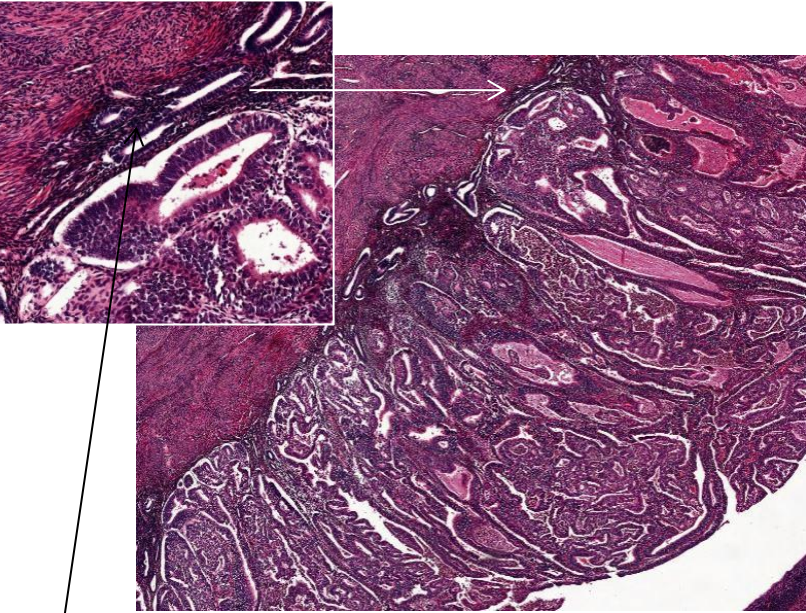


(Too darkly stained section, but still possible to diagnose.)

Take a look at the myometrium as well as the part of the cavum uteri in the middle.

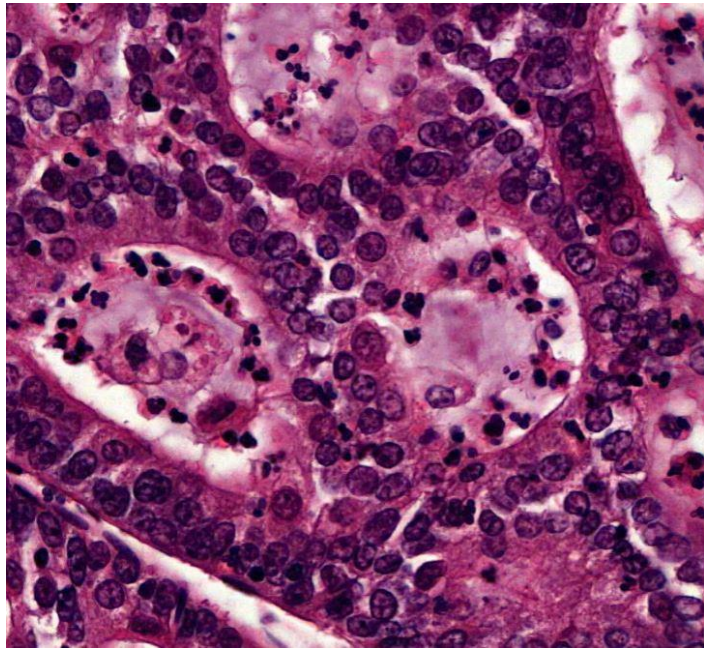
Where is the neoplastic pathology located?

# Endometriod adenocarcinoma



Compressed, normal glands between tumor and myometrium: intramucosal growth

Tumor glands fusing (no intervening stroma), cylindrical cells, granulocytes in the lumina, still some polarisation of nuclei



Normal appearing (too darkly stained) endometrium close to tumor