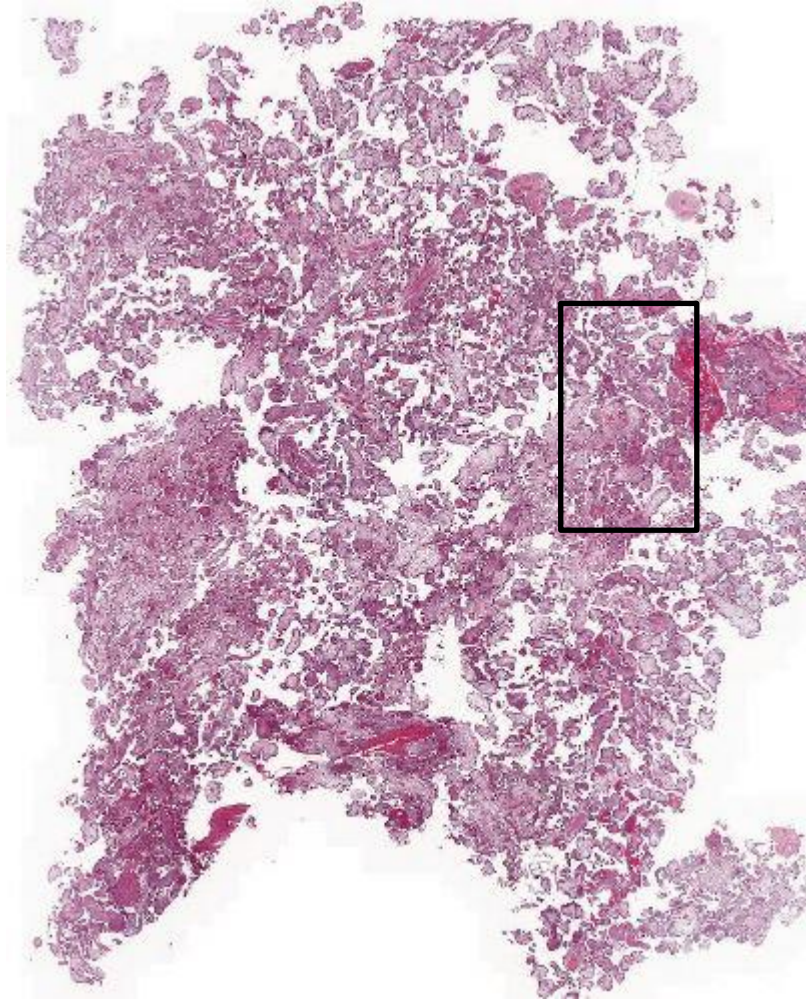
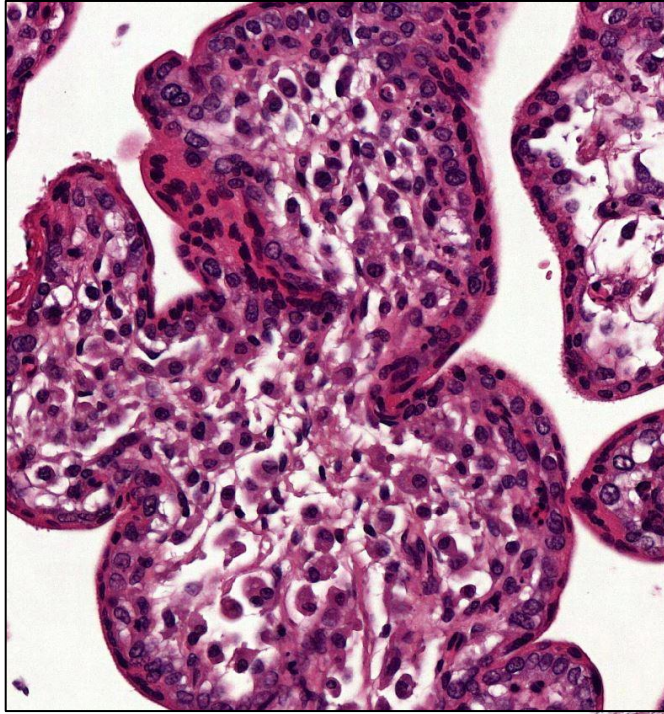


Placenta with villitis

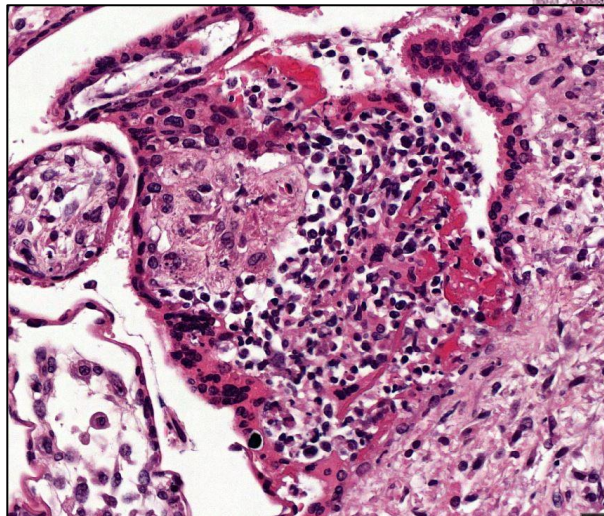
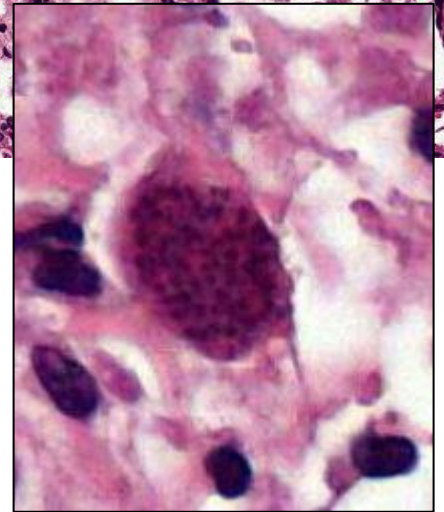
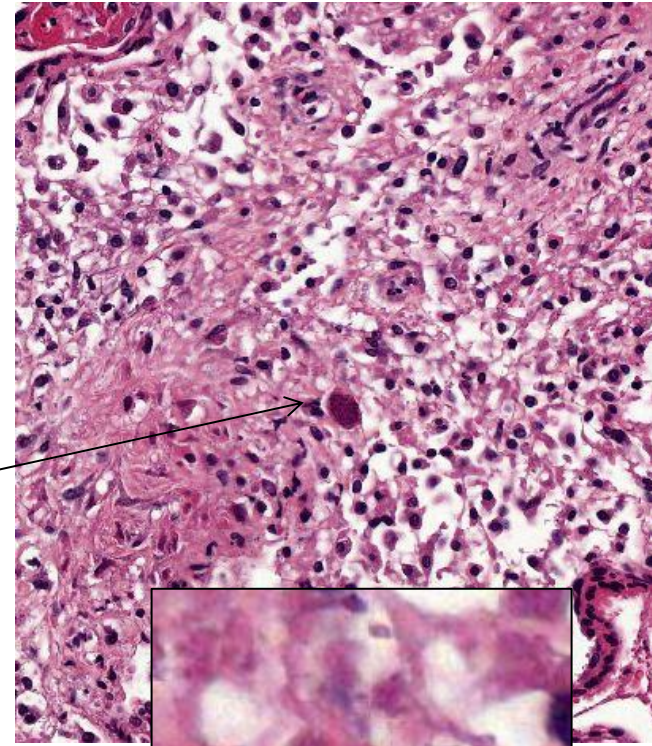
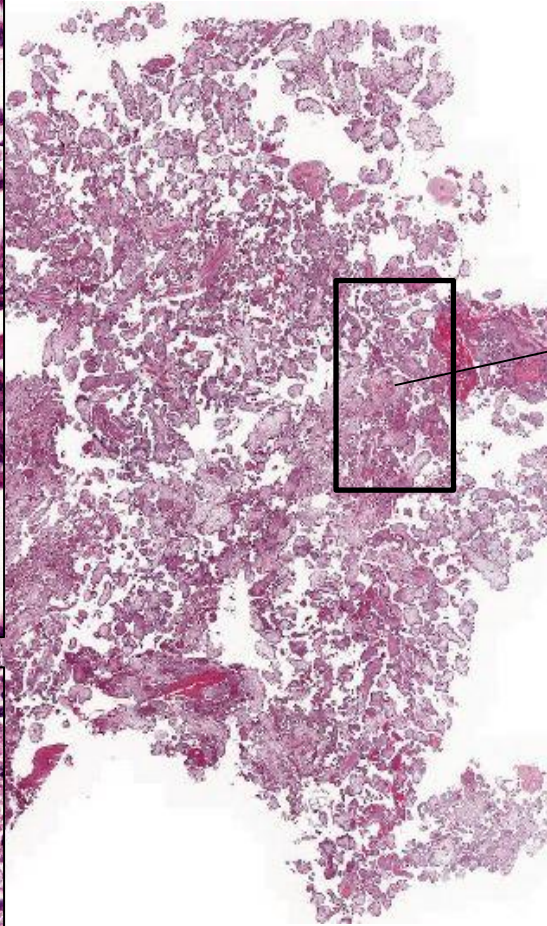


Shape of villi, number of layers, maturity?
Cellularity – what kind of cells in stroma? Vessels?
Areas with infection - describe
Parazite

Immature villi, more cellular with Hofbauer cells and plasma cells



Placenta with villitis



Microabscesses underneath the villous surface (to the left) or in the villus (upper right)

Bradyzoite, toxoplasma cyst