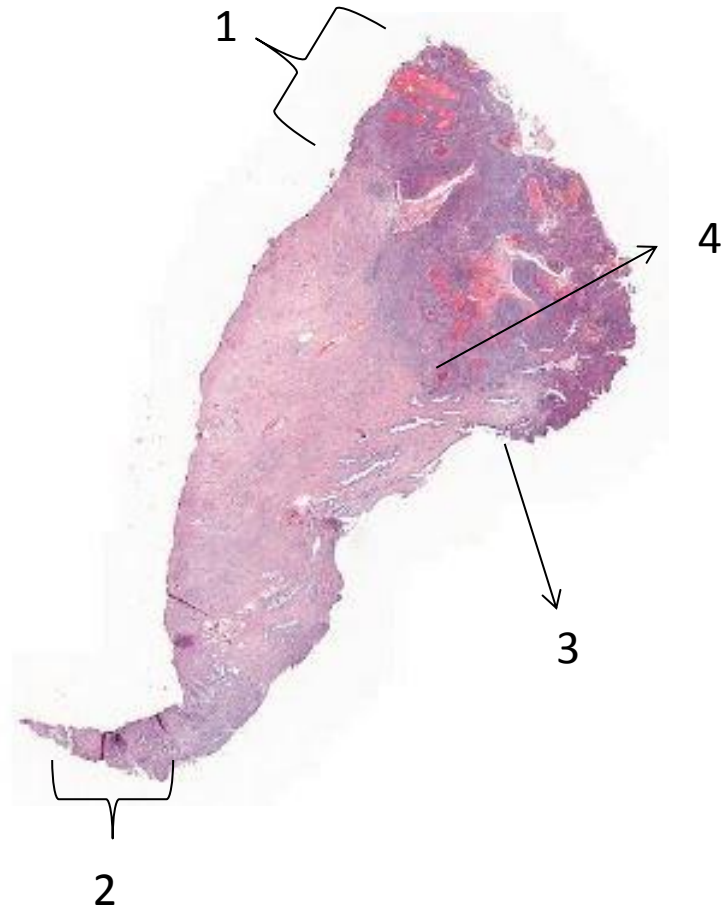


Cervical cone with SCC

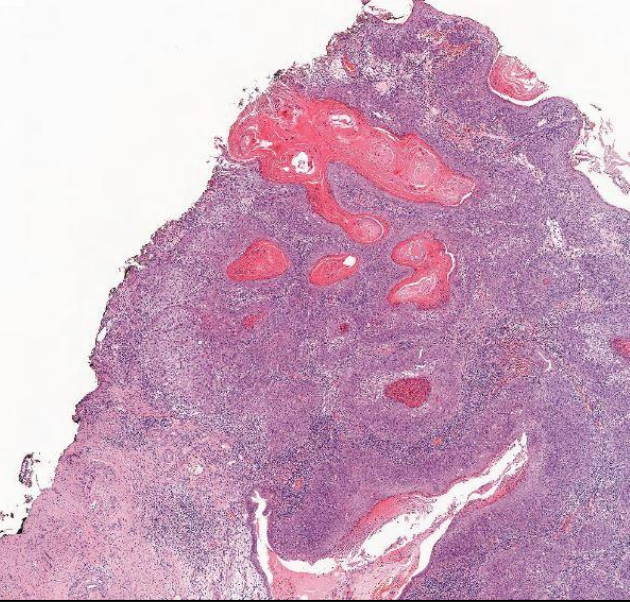


Which part is towards endocervix, which towards vagina?

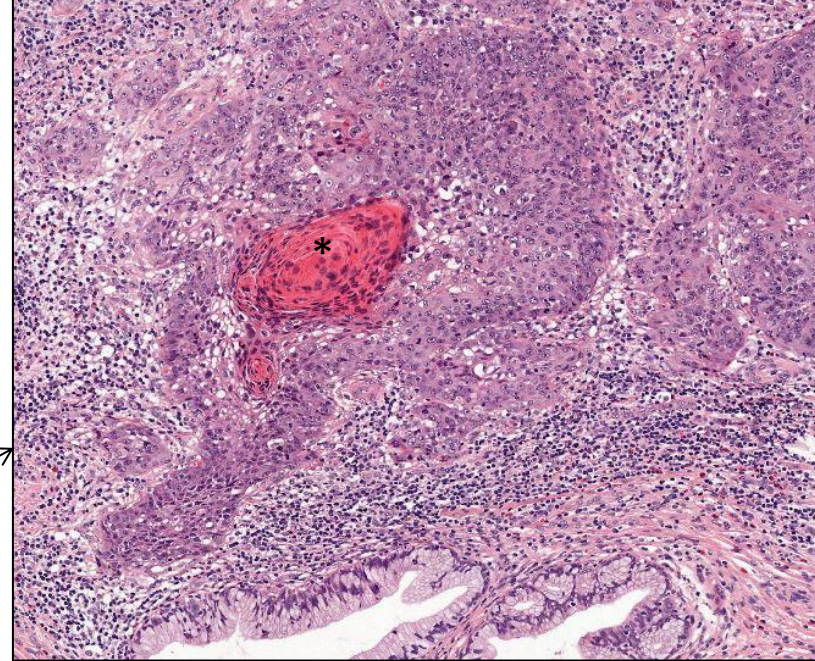
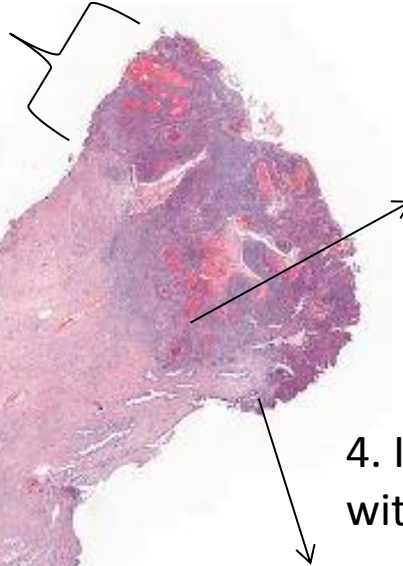
Resection margins?

Where is the transformation zone and which changes do you see?

Study the invasive tumor. What kind of differentiation do you see?



Cervical cone with SCC

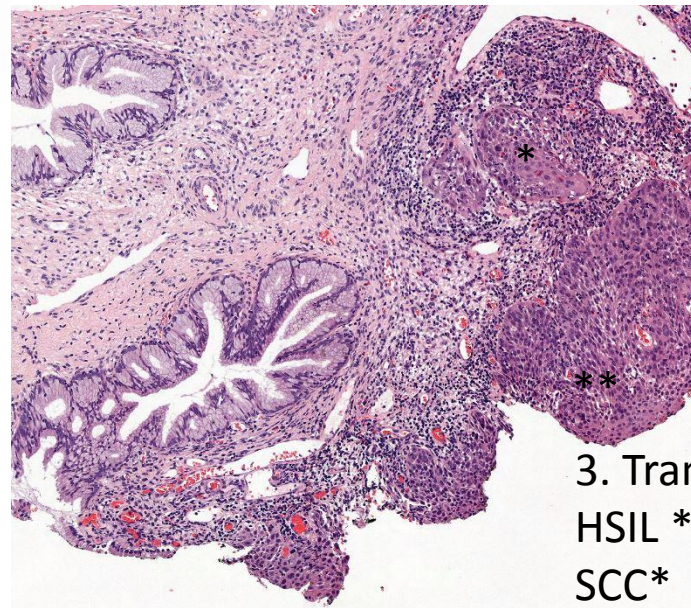
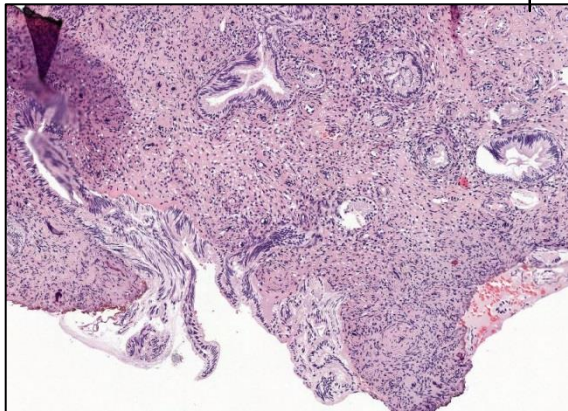


4. Invasive front of squamous cell carcinoma with squamoid pearls*

Resection margins:

1. Towards vagina (above): tumor.

2. Towards endocervix (below) Normal and slightly burned mucinous glands



3. Transformation zone: HSIL ** and invasive SCC*