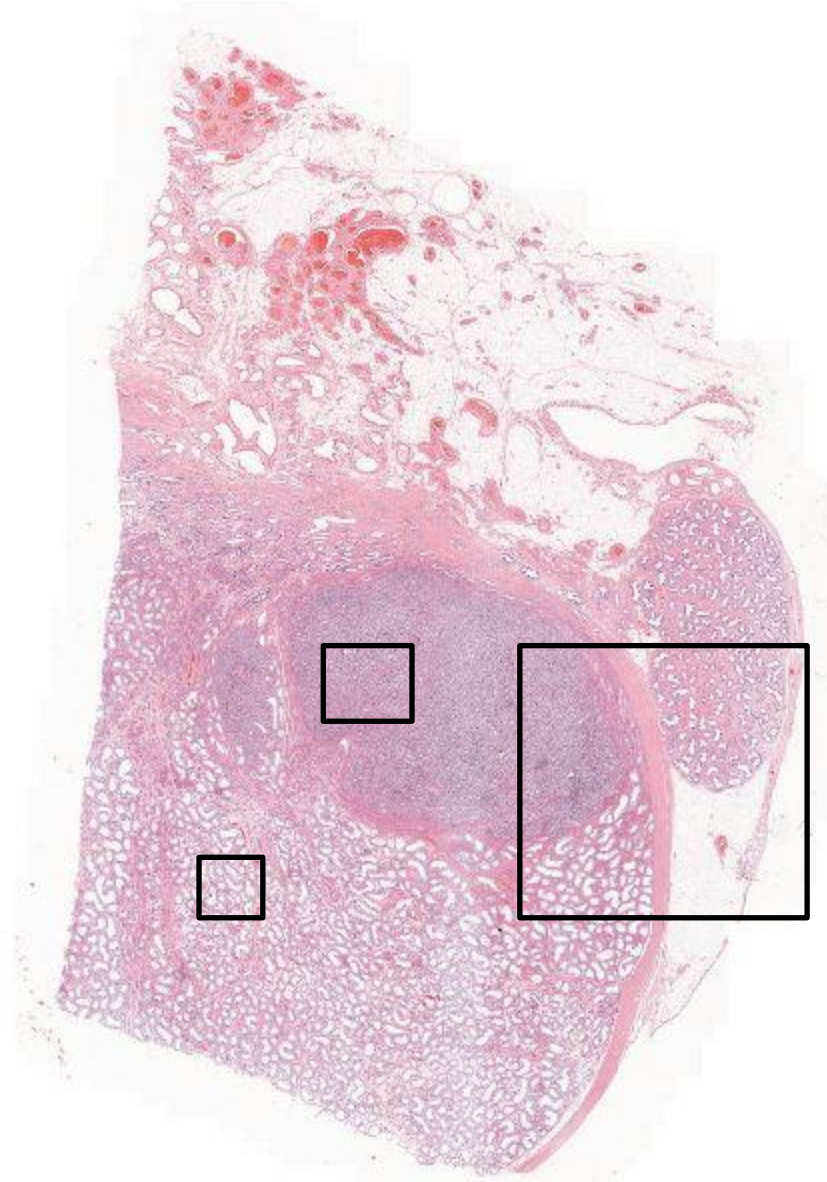
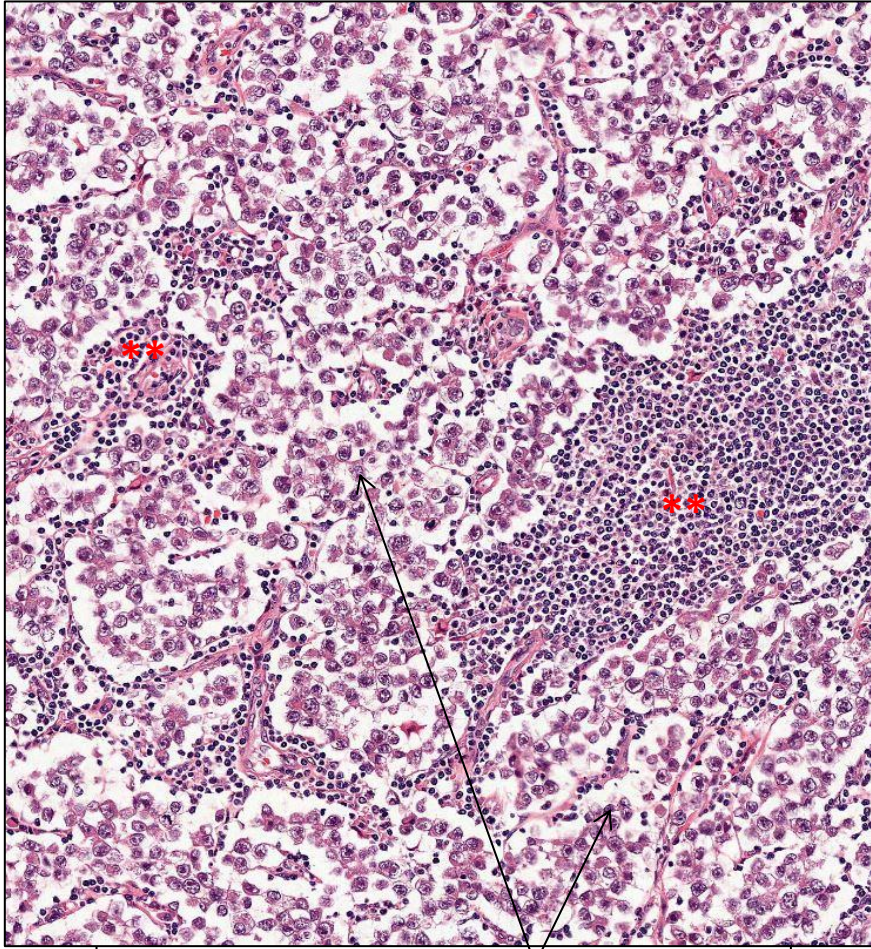


Seminoma



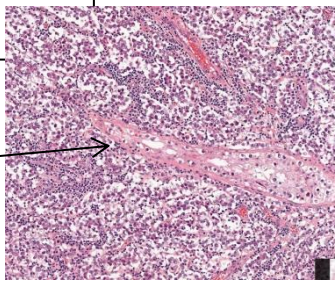
Anatomy – describe the anatomy and histology of normal tissue
Tumor characteristics? Cells, growth pattern, circumscription?

Seminoma

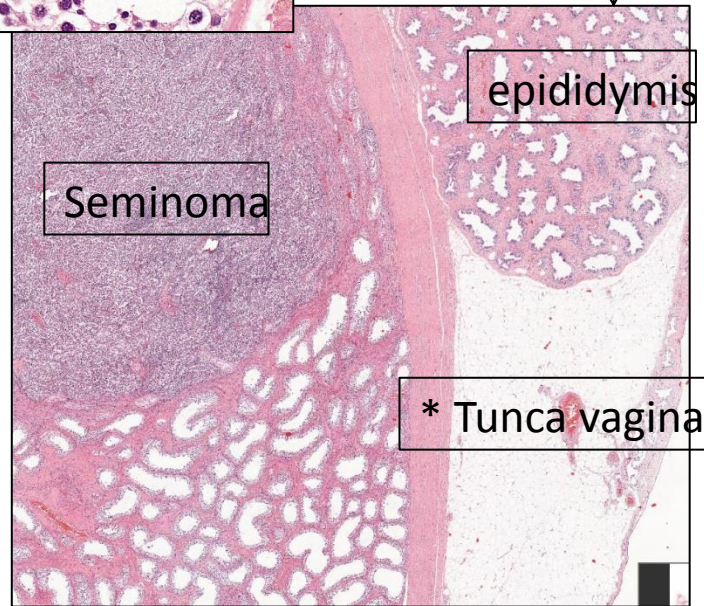
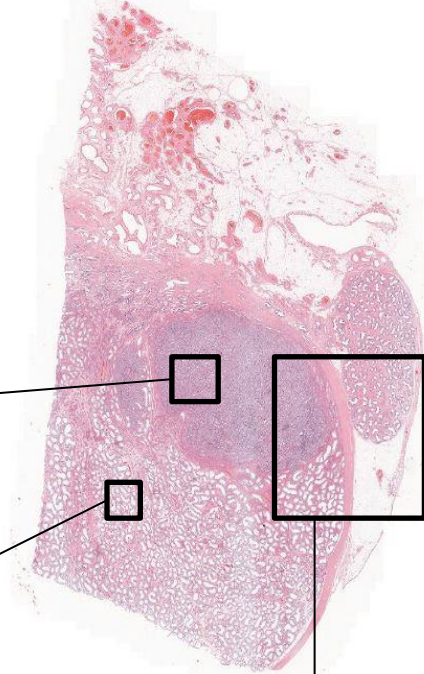
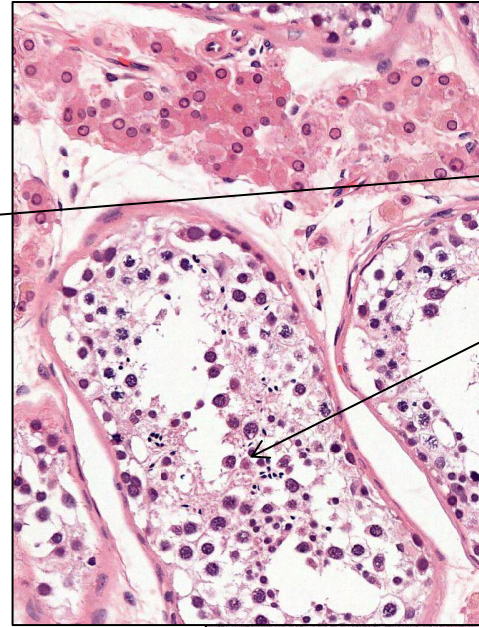


Diffusely growing seminoma cells with lymphocytes**

Seminoma infiltrating around atrophic ductuli with atypical spermatogonia



Normal tissue with spermatogenesis and Leydig cells



epididymis

Seminoma

* Tunica vaginalis