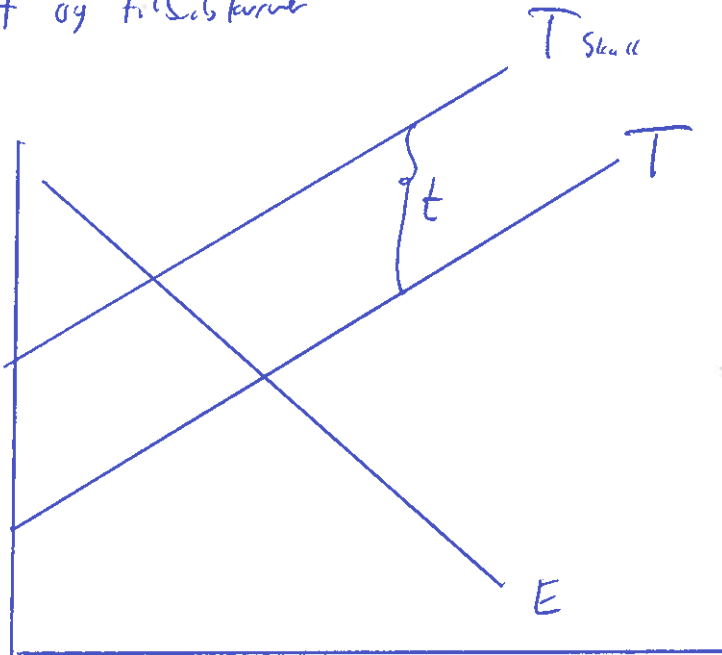


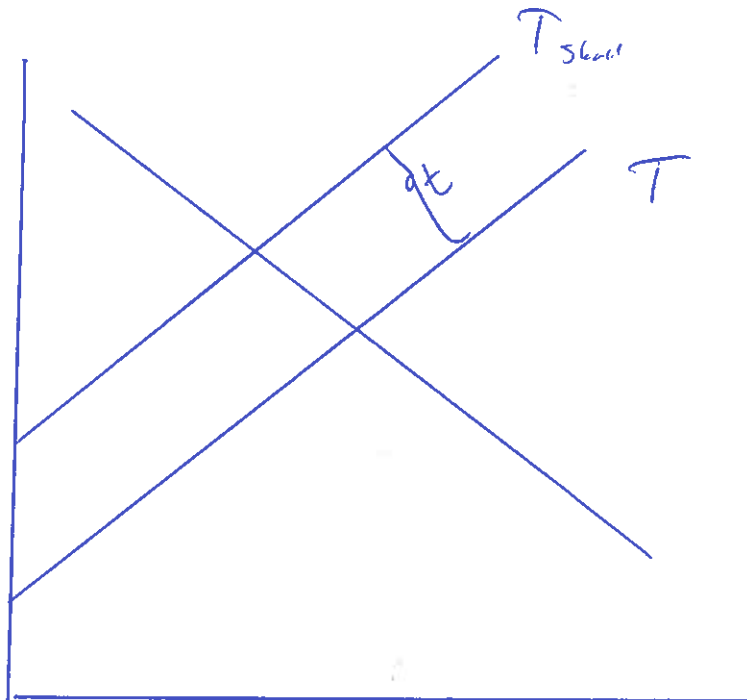
~~TAP~~ ved skatt

Skatt og tilbuds kurver



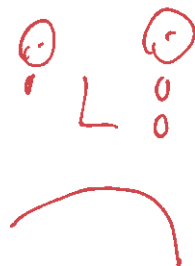
Den **vertikale** avstanden mellom T-kurvene med og uten stykkavgift er lik størrelsen på stykkskatten

RIKTIG



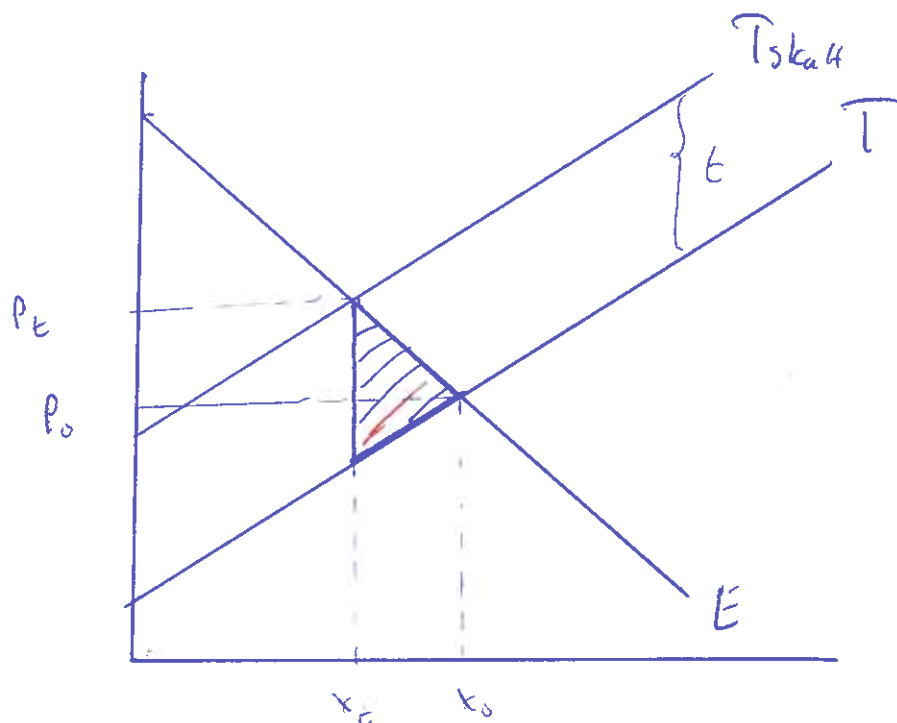
...IKKE den parallelle avstanden

FEIL!

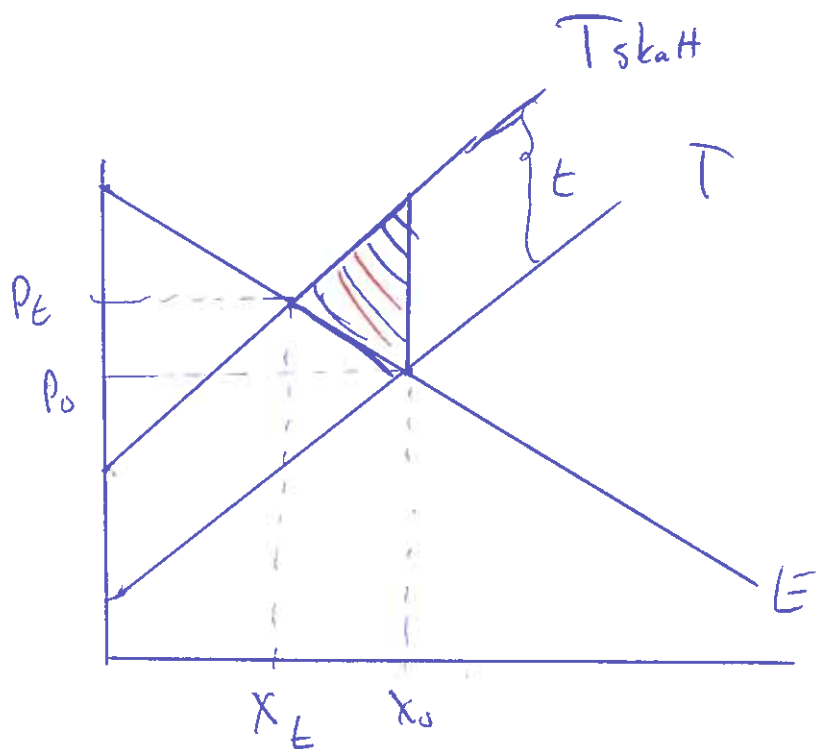


Effektivitetstap skatt

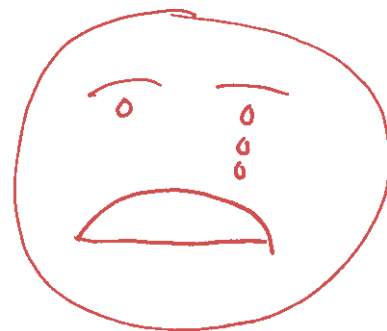
(Tilsvarende tap ved positiv eksternalitet)



RIKTIG

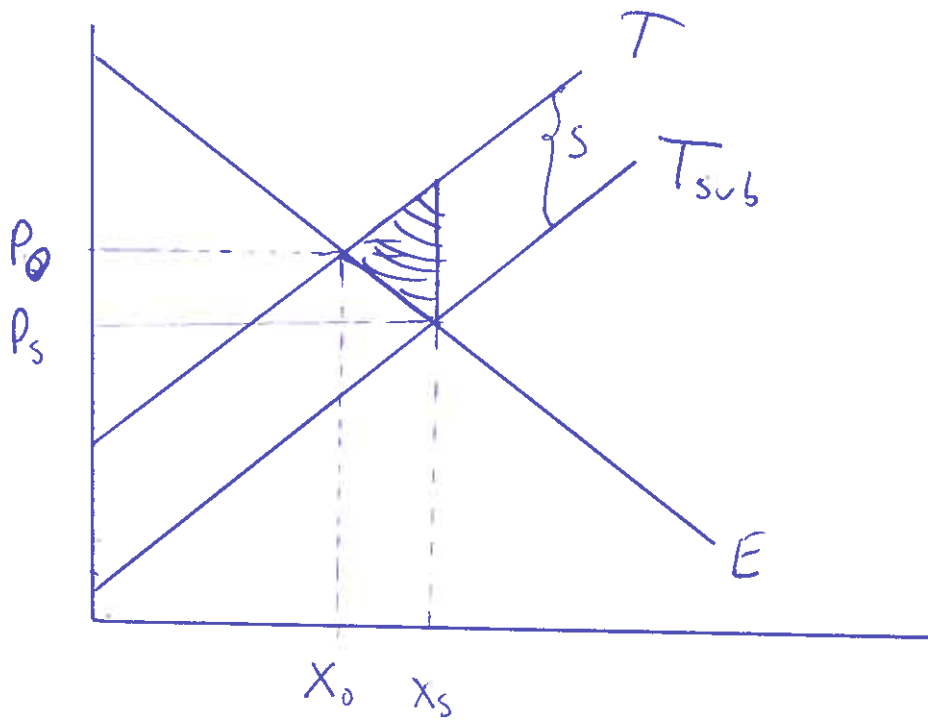


FEIL!

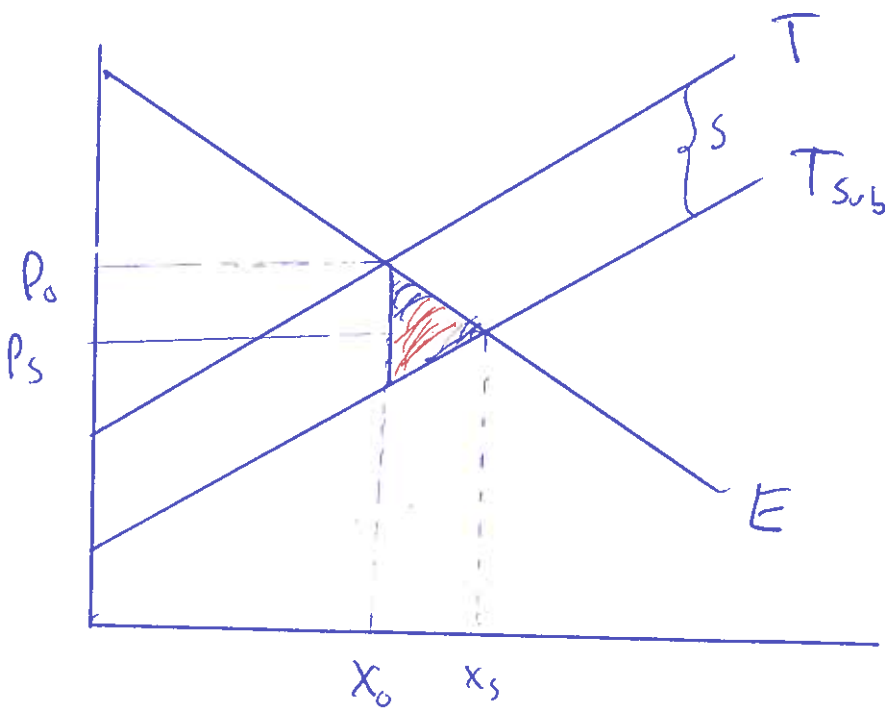


Effektivitetstap subsidier

(Tilsvarende tap ved negativ eksternalitet)



RIKTIG



FEIL!

